

WHERE CANADA GOES FOR ALL THEIR INDUSTRIAL PROCESS NEEDS!

PREMIUM PROCESS SOLUTIONS
FROM PREMIUM MANUFACTURERS

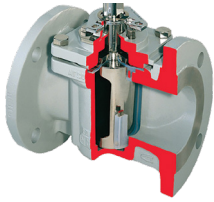


Process & Steam Specialties West



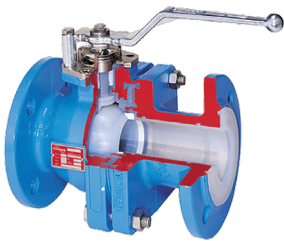
Western Canada
General Products Line Card

FLOWSERVE



Durco Valves

Plug Valve: Exotic Alloy, T-Line PFA Lined. Durco High Performance Butterfly Valves, Triple Offset Butterfly Valves.



Atomac Valves

Teflon Lined Ball Valves, Check Valves, Strainers. PFA and Ceramic Linings. Sight Glass.

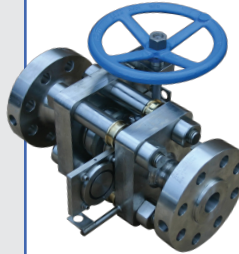
Automax Automation Systems

Complete Valve Automation, Apex Pneumatic, Digital and Electro-Pneumatic Positioners.



Strahman

Highest Quality Sampling and Drain Valves available in Stainless Steel and a variety of Alloy metals. Line Blinds, Washdown Stations, Water Mixing and Steam Valves.



DRESSER

NATURAL GAS SOLUTIONS



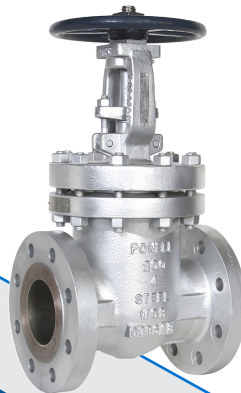
Electric Actuators - Spring Return Fail Safe, Fail Last.

The only authorized Canadian CSA Certified RCS Repair Centre.



POWELL VALVES

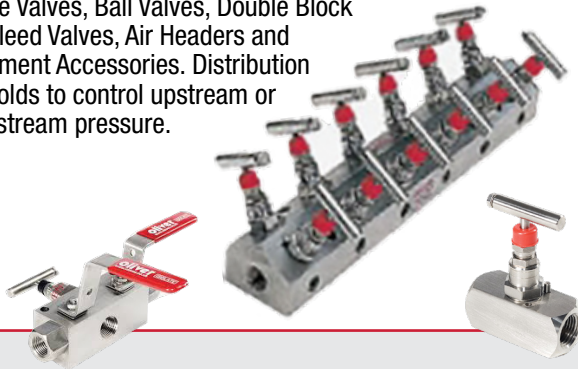
API 600 Pressure Seal Valves, API 594 Dual Plate Check Valve, Gate Valve (API 600, 602 and 603), Globe Valve (API 600, 602 and 603), Check Valve (API 600, 602 and 603)



Where
Canadians
go for industrial
process equipment!

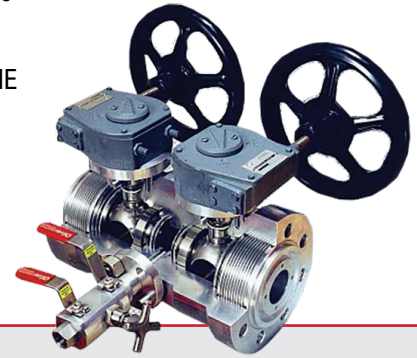
oliver valves

Needle Valves, Ball Valves, Double Block and Bleed Valves, Air Headers and Instrument Accessories. Distribution Manifolds to control upstream or downstream pressure.

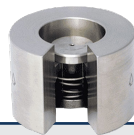
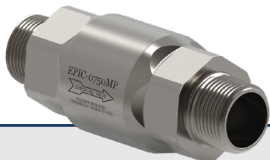


oliver twinsafe

Single Bodied Double Block and Bleed Ball Valves to ASME B16.10 Length. ASME Class 150-1500.



High Quality In line, Silent, Spring loaded, Piston type Check Valves, Pressure Relief Valves and Vacuum Breakers. Flange Inserts to ASME Class 600, Threaded to 10,000 PSI. Most Metallurgies, various Elastomer or Metal Seats. 0.25 to 75 PSI Cracking Pressures available.



ENGINEERING
YOUR SPRAY SOLUTION



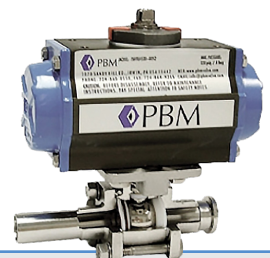
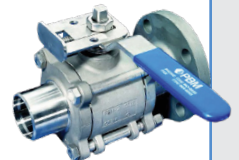
Worldwide manufacturer of precision spray nozzles, headers and systems for tank cleaning, cooling, humidification, coating and lubricating. Products include tank cleaning nozzles, pneumatic atomizing nozzles, hollow cone nozzles, solid stream nozzles and air nozzles.



Floating and Trunnion Ball Valves, Butterfly Valves, V-Port Control Ball Valves, Multi-Port Ball Valves, Valve Automation Products.



Engineered Valve Solutions, 2-Way, 3, 4 and 5-Way Multiport, Ball Valves, Sanitary ball valves - ASME BPE compliant, low ferrite cast and forged body design, in line cleanability.



NCI

Wide range of Gate Valve, Globe Valve, Butterfly Valve, Check Valve and Ball Valves available in Bronze, Cast Iron, Carbon Steel, and Stainless Steel material. Double door silent Check Valve and Y-Strainers.



MICROMOLD

Threaded piping system for highly aggressive fluid, with the corrosion resistance and purity of PTFE.



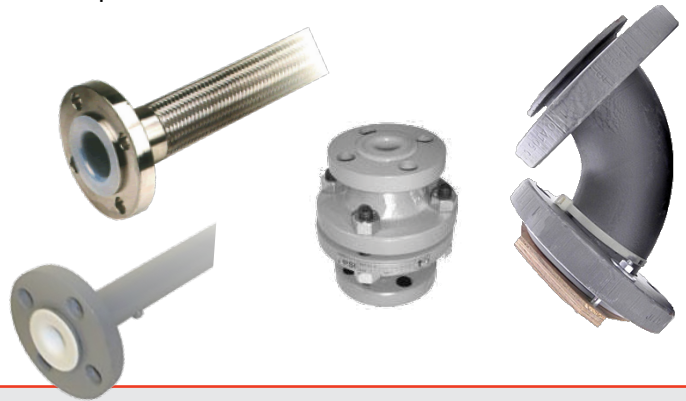
Safety Spray Shields for Flanges, Valves and Expansion Joints for the containment and detection of hazardous spray outs.



CRANE PSI

LINED PIPING SYSTEMS

Plastic Lined Piping Systems, PTFE, PFA, PVDF, PP, Custom Shapes, Multi-plane Flange Reduction System, Resistoflex PTFE Lined Hose Assemblies and Expansion Joints.



CARTEN® Fujikin

Carten is a global leader in the design and manufacture of Ultra High Purity valves and flow system components. Fujikin ceramic Ball, Butterfly, and Gate valves are used in abrasive, corrosive, and toxic applications.

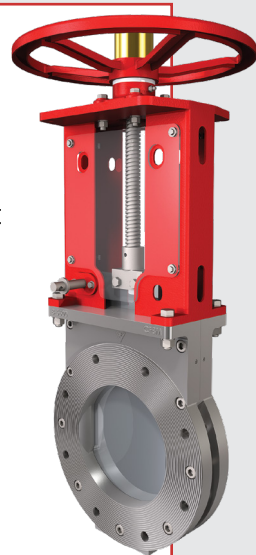


Elite Valve

Knife gates in Stainless Steel and Exotic Materials, High Performance, Metal and Resilient Seats, Bonnet

Available, Canadian Manufactured. Split Body Butterfly Valves, wafer and drip tight dead end lug style in Ductile Iron or Stainless Steel bodies.

High Performance Butterfly Valves, wafer and lug style, 285 PSIG.





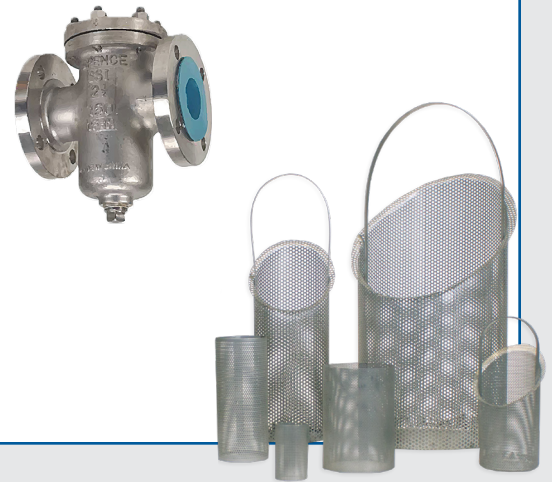
Threaded and SW End 1, 2, 3 Piece Ball Valves, Carbon and Stainless Steel, Flanged Floating and Trunnion Ball Valves. Resilient Seated Butterfly Valve 2" to 24", 250 PSIG, NSF 61, Manual and Automated. Valve Position Monitor, Check Valves, Sanitary Valves and Fittings.



Contact us today and discover why we are Canada's leader for all your industrial equipment needs.



Y-Strainers, Basket Strainers, T-Strainers, Automatic Backwash Strainers, Check Valves.



Full-port 3-Way Piggable Valves, and 2-Way through 5-Way Rotor Valves.



The WGI product line is extensive and offers pressure gauges, needle and ball valves, temperature indicators, thermowells and regulators.



The Velan steam trap line offers bimetallic, float and thermostatic, piston operated, and thermodynamic steam traps. Applications include refineries, power generation, building heating systems and many more.



TLV

TLV is a leading manufacturer that specializes in all Steam and Air related products including Steam traps, Control Valves, Pressure Regulators, Condensate Recovery, Air Vents, Vacuum Breakers, Disc Check Valves, Thermocompressor, Clean Steam Products, Stainless Steel Products and much more.

*Not Supplied for Institutional, Food & Bev in British Columbia

**Not Supplied for Oil Industries in Alberta



FORBES MARSHALL

Modulating Control Valves, Separators, Pump/Trap, Universal Steam Traps, Pressure and Temperature regulators, Vent Heads, Air Vents, Air Eliminators, Steam Injectors, Desuperheater, Thermocompressor and many more.



PSS

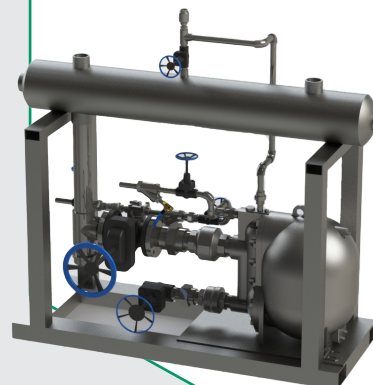
Process & Steam Specialties

Fabricated Skid Packages

Instantaneous Heat Exchanger packaged skid. Steam to Water & Glycol Heat Exchanger Fabricated Packages for DHW and Building Heat.



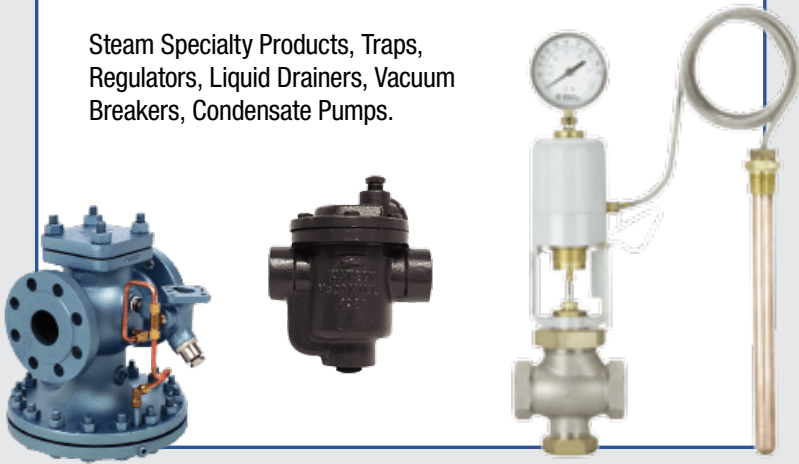
Simplex and Duplex construction
Mechanical Pressure
Power Pump Skid
Fabrication.



Where
Canadians
go for industrial
process equipment!



Steam Specialty Products, Traps, Regulators, Liquid Drainers, Vacuum Breakers, Condensate Pumps.



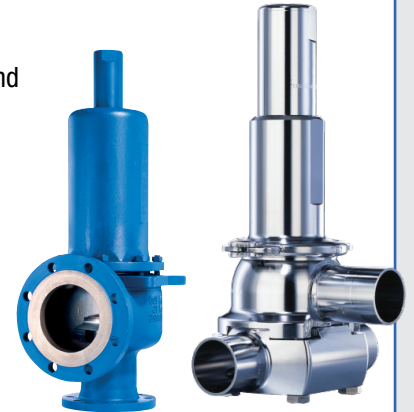
Ball and Butterfly Valves, Valve Automation Products, Pressure Relief Valves.



Simplex & Duplex construction Electrical Condensate Pump and Boiler Feed Pump Skids with Cast Iron and Carbon Steel atmospheric receiver. Available with optional features and much more.



LESER offers spring loaded, pilot, flanged and threaded valves for all industrial applications - with a wide range of options. Full assembly capabilities offered.



Standard and custom engineered Heat Exchangers. Shell & Tube, Extended Shell & Tube, Air Coolers, Heat Transfer Coils, Compact Brazen Plate and Gasketed Plate & Frame.



Bronze, Cast Iron, Cast Steel, Stainless Steel Safety Relief Valve available for Steam, Air and Water service.

